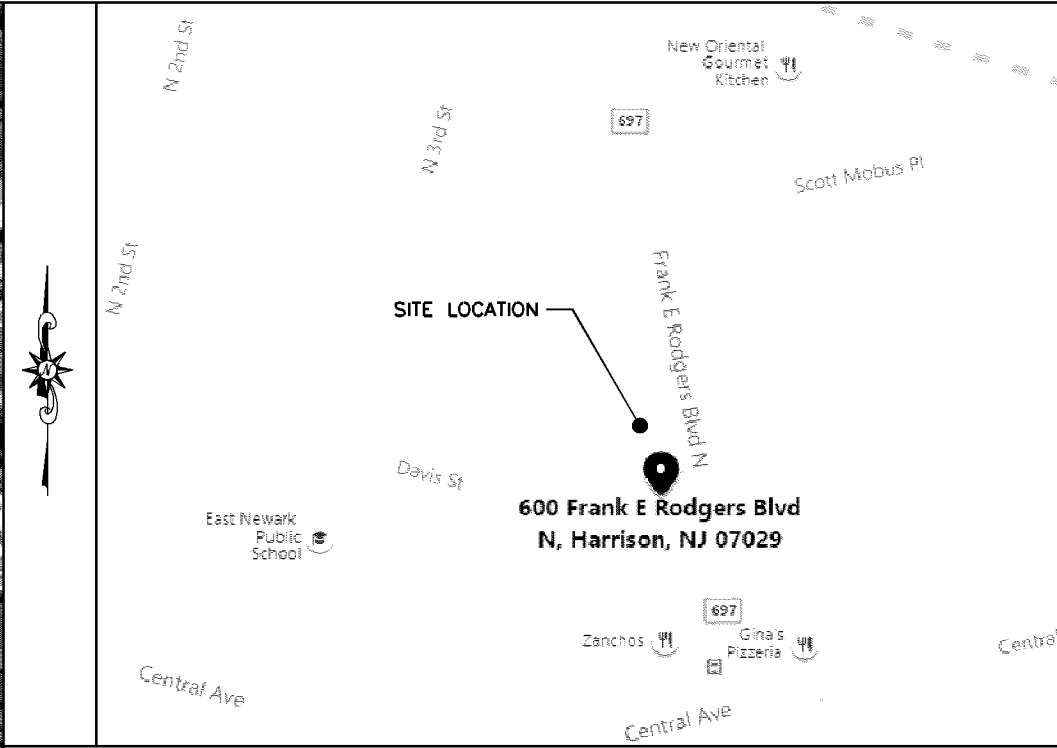


# T-MOBILE NORTHEAST LLC

A Delaware limited liability company

SITE #: NJ06856D



| SCOPE OF WORK   |  |
|---|--|
| The Installation Of An Unmanned Telecommunications Facility Located At The Site. The Installation Of (9) Proposed Equipment Room Located Within 1st Floor. The Installation Of (9) Proposed Antennas. The Installation Of (9) Proposed Radio Units. The Installation Of (1) Proposed Microwave Antenna. The Installation Of (2) Proposed GPS Units Located At The Roof. |  |
| PROJECT DIRECTORY   |  |
| <b>APPLICANT:</b><br>T-Mobile Northeast, LLC.<br>4 Sylvan Way<br>Parsippany, NJ 07054<br>Rob Ciaglia (973) 397-4814   |  |
| <b>ENGINEERING PROJECT MANAGER:</b><br>Colleen Connolly, P.E.<br>53 Frontage Road, Suite 260<br>Hampton, NJ 08827<br>(908) 323-2513   |  |
| <b>PROPERTY OWNER:</b><br>Camesh Chalom LLC<br>600 Rodgers Blvd N.<br>Harrison, NJ 07029  |  |
| <b>ATTORNEY:</b><br>Frank Ferrano, Esquire<br>Ferrano & Stamos, LLP<br>(201) 767-4122   |  |
| <b>SITE INFORMATION:</b><br>600 Frank E. Rodgers Blvd N<br>Harrison, NJ 07029<br>Block : 24 Lot: 8.01<br>Zone: Neighborhood Commercial<br>Map: 11   |  |

## AERIAL PHOTOGRAPH

SCALE: 1" = 100'

## LOCATION MAP

SCALE: 1" = 100'

## SITE COORDINATES

LATITUDE: N40°45'02.86" (NAD83)  
LONGITUDE: W74°09'26.99" (NAD83)  
GROUND ELEVATION: 48' +/- (NAVD88)

| Block No. | Lots  | Name of & Address of Owner  |
|-----------|-------|---|
| 23        | 1     | Jose&Manuela Ventoso<br>115 Court Avenue, Lyndhurst, NJ 07071             |
| 23        | 2     | Shi, Shuang&Wang, Wen Dong<br>1030 E. Lancaster Ave., Bryn Mawr, PA 19010 |
| 23        | 3&4   | Rocco&Marietta Russomanno<br>131 Cross Street, Harrison, NJ 07029         |
| 23        | 5     | 506 Frank E. Rodgers, LLC<br>P.O. Box 942, Jensen Beach, Florida 34958    |
| 23        | 6     | Barros, M.&Chaves J.&M.<br>465 Shirley Lane, Brick, NJ 08723              |
| 23        | 7     | Carmen Luz Gutierrez<br>502 Rodgers Blvd. No., Harrison, NJ 07029         |
| 23        | 9     | Eric Lam<br>17 Douglas Street, Millburn, NJ 07041                         |
| 23        | 10.01 | Jose L. Mojano<br>326 Central Avenue, Harrison, NJ 07029                  |
| 23        | 11.01 | Nilo C. Macedo<br>322 Central Avenue, Harrison, NJ 07029                  |
| 23        | 13    | Fred & Julie Walsh<br>14-16 Davis Street, Harrison, NJ 07029              |
| 24        | 1     | Hudson Houses, LLC<br>72 Davis Ave., Kearny, NJ 07032                     |
| 24        | 2     | Angel Redonda<br>612 Rodgers Blvd., No., Harrison, NJ 07029               |
| 24        | 3     | Li Kingyu<br>610 Rodgers Blvd. No., Harrison, NJ 07029                    |
| 24        | 4     | Xiang, Yueng & Xu, Kai<br>14 Largo Lane, Livingston, NJ 07039             |

| Block No. | Lots  | Name of & Address of Owner  |
|-----------|-------|---|
| 24        | 9.01  | Jaime J. Mosquera<br>4 Rowling Court, Verona, NJ 07044                  |
| 24        | 10    | 618 Harrison, LLC<br>5105 Junction Blvd., Elmhurst, NY 11373            |
| 24        | 11    | Town of Harrison<br>620 Rodgers Blvd. No., Harrison, NJ 07029           |
| 26        | 1     | Iris & Robert Ferreira<br>613 FER Blvd. North, Harrison, NJ 07029       |
| 26        | 2     | Antonio & Maria Domingues<br>169 Parkside Drive, Union, NJ 07083        |
| 26        | 4     | Chen Wangzhi & Queli Zhang<br>607 Rodgers Blvd. No., Harrison, NJ 07029 |
| 26        | 5.01  | 605 Frank E. Rodgers Blvd. LLC<br>29 Locust Avenue, Kearny, NJ 07032    |
| 26        | 6.01  | Juan & Bertha Quinoz<br>603 Rodgers Blvd. No., Harrison, NJ 07029       |
| 26        | 8.01  | Antonio & Maria Vazquez<br>338 Highland Avenue, Kearny, NJ 07032        |
| 26        | 9.01  | Dong, Qianhen<br>208 River Renaissance, E. Rutherford, NJ 07073         |
| 26        | 9.02  | Prah, Julisena<br>405 Scott-Mobus Place, Harrison, NJ 07029             |
| 26        | 10.01 | Benvinda L. Neves<br>407 Scott-Mobus Place, Harrison, NJ 07029          |
| 26        | 40.02 | Maria Da Maia<br>10 Davis Street, Harrison, NJ 07029                    |

## LEGAL DESCRIPTION

BLOCK: 24  
LOT: 8.01  
ZONE: NC - "NEIGHBORHOOD COMMERCIAL"  
MAP #: 11

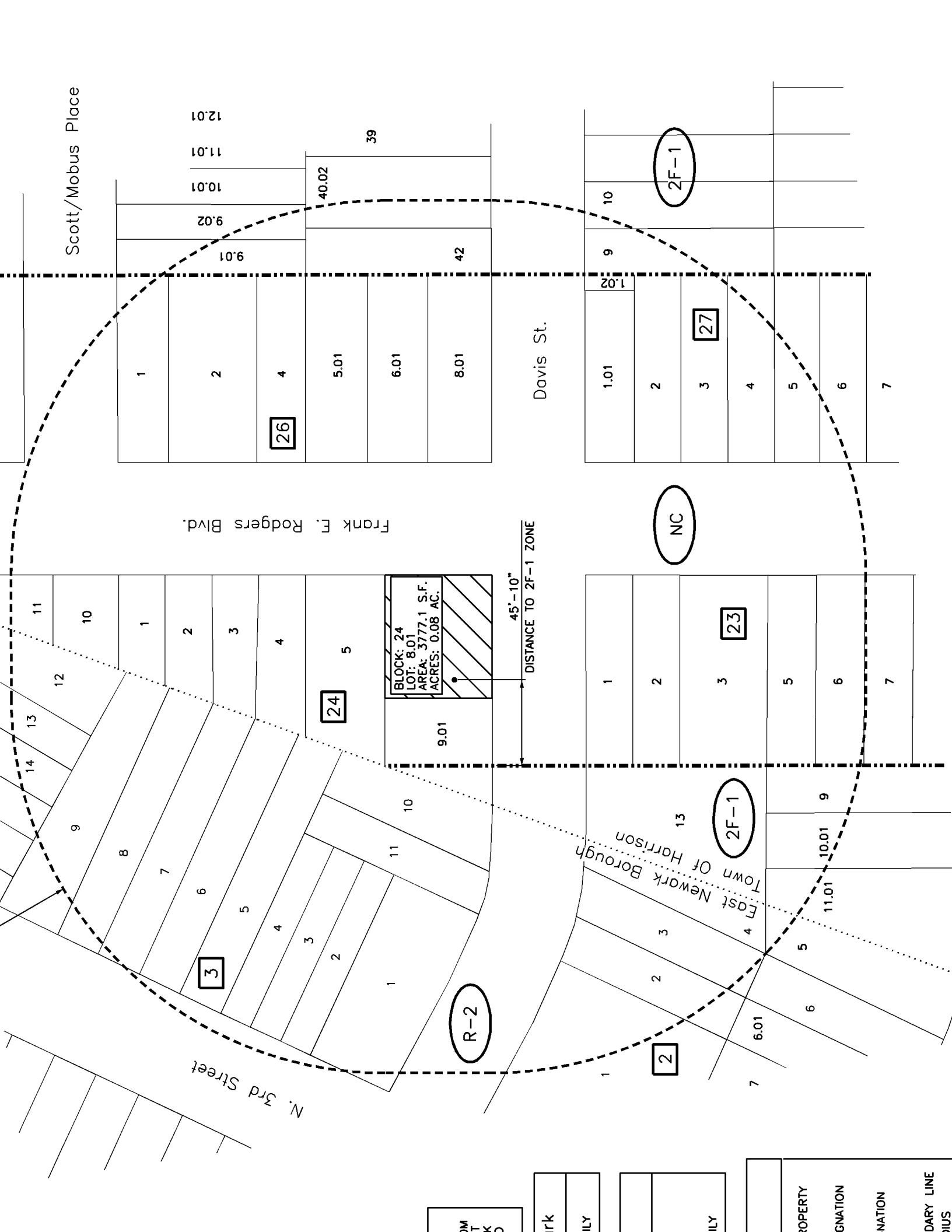
| APPROVALS                           |                               |
|-------------------------------------|-------------------------------|
| HARRISON ZONING BOARD OF ADJUSTMENT | DATE <input type="checkbox"/> |
| CHAIRMAN OF THE BOARD               | DATE <input type="checkbox"/> |
| SECRETARY OF THE BOARD              | DATE <input type="checkbox"/> |

Attachment to all Property Owner Lists  
Please note, if application is being made for variance,  
site plan and/or subdivision approval, the following  
criticisms are required to be notified pursuant to  
N.J.S.A. 40:55D-12:

- Public Service Electric & Gas Co. (PSE&G)  
Manager - Corporate Properties  
80 Park Plaza, 15B  
Newark, N.J. 07102
- Verizon  
540 Broad Street  
Newark, N.J. 07101
- Passaic Valley Water Commission  
1525 Main Avenue  
P.O. Box 259  
Clifton, N.J. 07011
- Passaic Valley Sewer Commission  
500 Wilson Avenue  
Newark, N.J. 07105
- Comcast Cablevision of New Jersey  
500 Railway Avenue  
Union, N.J. 07083
- Town of Harrison Water Department  
600 Essex Street  
Harrison, N.J. 07029
- Thomas A. DeGise  
County Executive  
County of Hudson  
535 Newark Avenue  
Jersey City, N.J. 07306
- Hudson County Department of  
Engineering & Planning  
595 County Avenue  
Scotchdale, N.J. 07094
- Office of the New Jersey Solicitor  
The Port Authority of New York and New Jersey  
Newark Legal Center  
One Riverfront Plaza - Suite 327  
Newark, N.J. 07102
- City of Newark, City Hall  
200 Broad St., Newark, NJ 07102
- Borough of East Newark  
34 Sherman Avenue

APPROVED

APPROVED

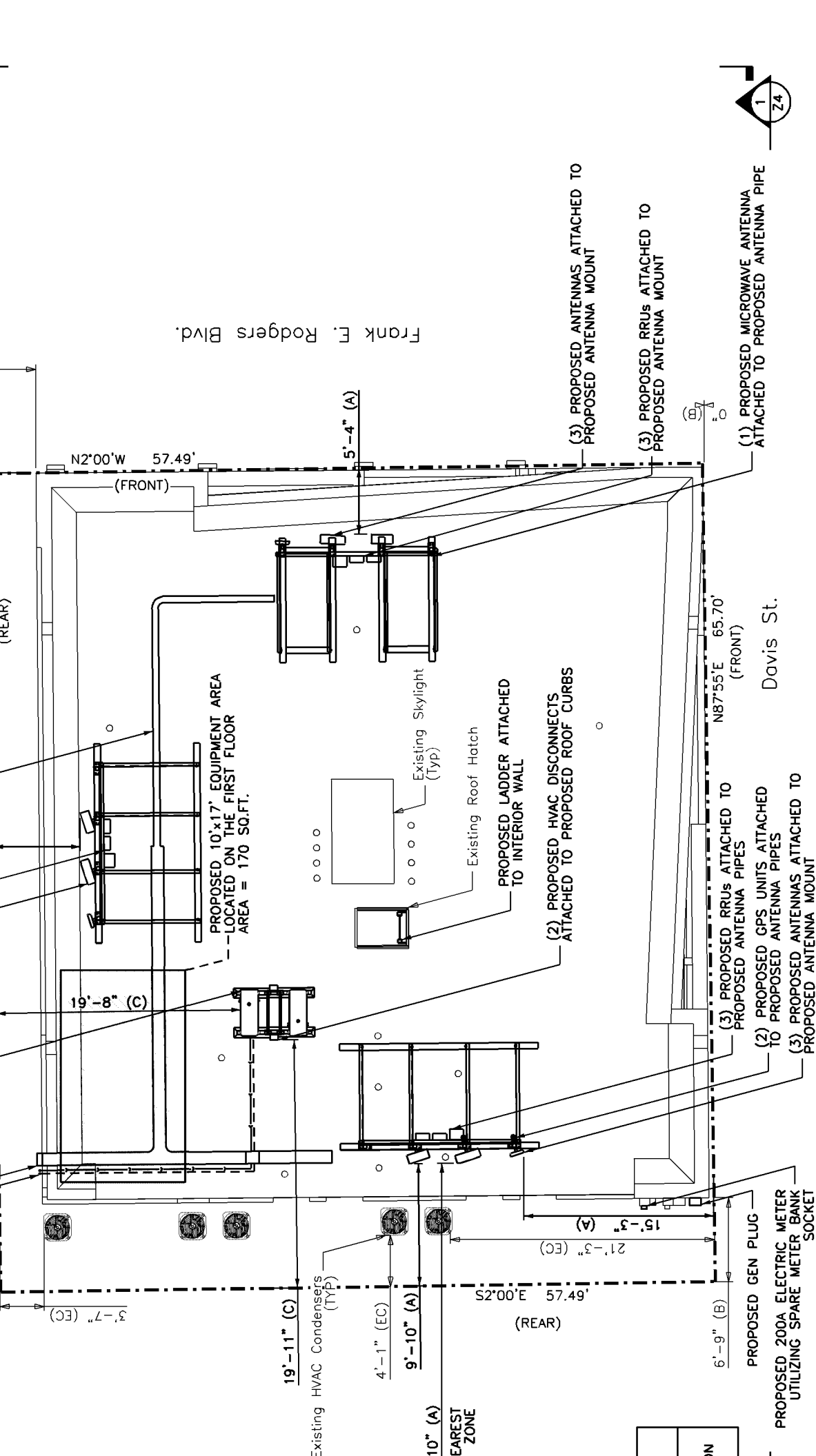


DOM  
T  
K  
D

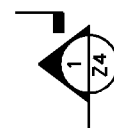
ark  
ILY

ILY

PROPERTY  
IGNATION  
NATION  
DARY LINE  
US



Frank E. Rodgers Blvd.



NOTES:

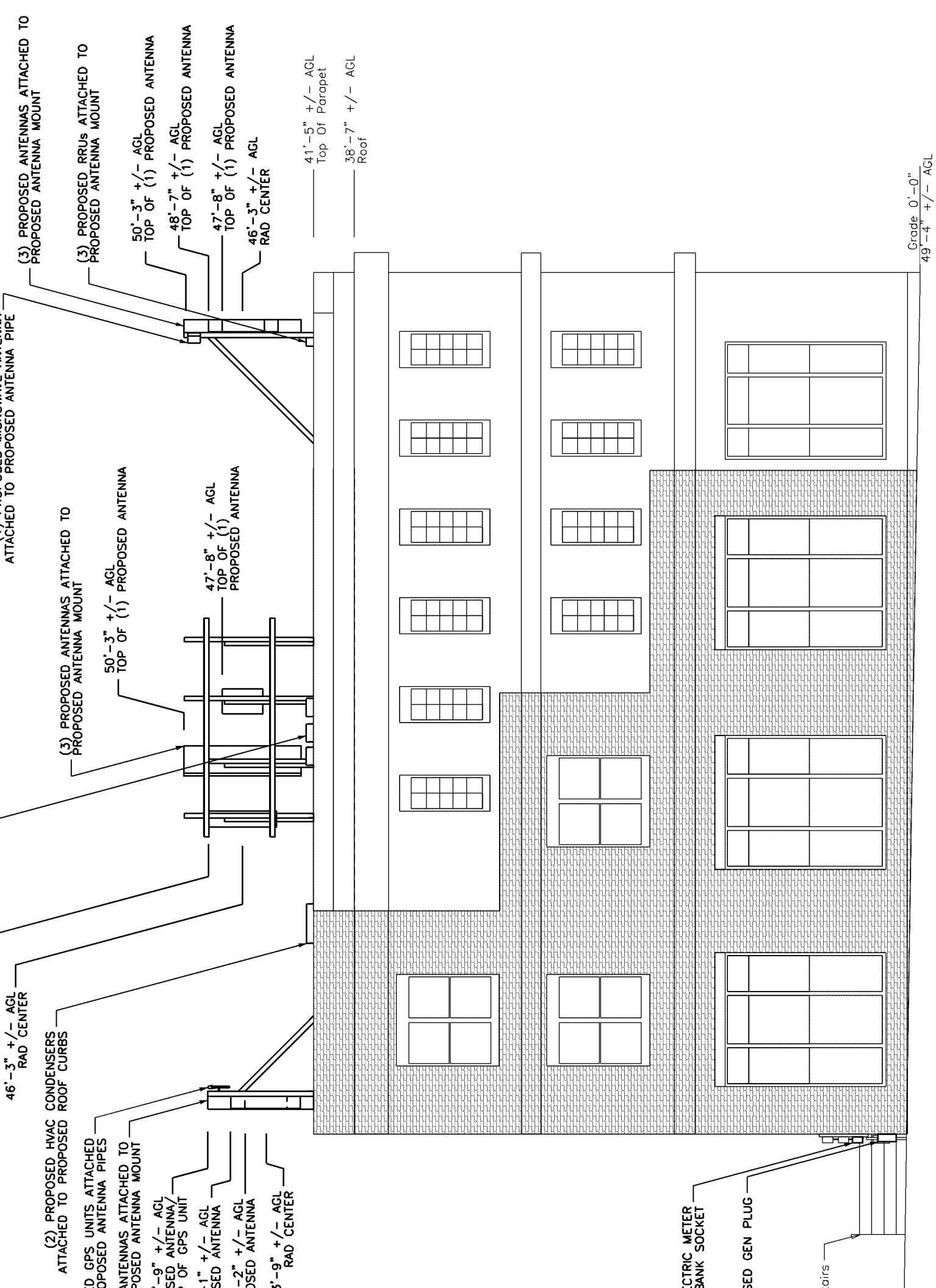
- SITE PLAN AND PROPERTY LINE DATA SHOWN WAS DERIVED FROM A SURVEY PERFORMED BY BORRIE, McDONALD & WATSON LAND SURVEYORS DATED 11/18/2016 AND ENTITLED "AS-BUILT SURVEY". THIS DRAWING DOES NOT CONSTITUTE A BOUNDARY SURVEY.
- THE PROPOSED USE OF THE DEVELOPMENT IS FOR AN UNMANNED WIRELESS COMMUNICATION FACILITY, THE FACILITY WILL NOT BE STAFFED FULL TIME. IT WILL BE VISITED FOR MAINTENANCE APPROXIMATELY ONCE PER MONTH. THE SITE TECHNICIAN WILL UTILIZE STREET PARKING ON A NEARBY STREET.
- ACCESS TO THE SITE WILL BE VIA AN EXISTING STREET. TRAFFIC IMPACTS WILL BE NEGLIGIBLE SINCE THE SITE IS UNMANNED.
- WATER COURSES OR FLOOD PLAINS WILL BE AFFECTED BY THIS PROPOSAL.
- PROPOSED FACILITY WILL BE MONITORED 7 HOURS A DAY, 7 DAYS A WEEK FROM REMOTE LOCATION.
- COMMERCIAL SIGNS WILL NOT BE DISPLAYED AT THE PROPOSED FACILITY. ONLY FCC REQUIRED WARNING SIGNS WILL BE PERMITTED.
- TRASH DISPOSAL IS NOT REQUIRED IN CONNECTION WITH THE PROPOSED INSTALLATION.
- THE CONTRACTOR SHALL ABIDE BY ALL

| WIRELESS ORDINANCE BULK TABLE          |          |                |
|--|----------|----------------|
| REQUIRED                               | EXISTING | PROPOSED       |
| Distance From Nearest Residential Zone | N/A      | 45'-10" (A) ** |
| Microwave Antenna                      | N/A      | Yes**          |
| Maximum Height                         | N/A      | 50'-3" (A)     |

EXISTING NON-COMPLIANCE:

| EXISTING | PROPOSED     |
|----------|--------------|
| 77 SF    | No Change    |
| 7.49'    | No Change    |
| 5.70'    | No Change    |
| 10" (B)* | 5'-4" (A)    |
| 9" (B)*  | 15'-3" (A)   |
| N/A      | N/A          |
| 10" (B)* | 6'-11" (A)** |
| 9" (B)*  | 9'-10" (A)** |

= 1'-0"



(3) PROPOSED ANTENNAS ATTACHED TO PROPOSED ANTENNA MOUNT  
 (3) PROPOSED RRUS ATTACHED TO PROPOSED ANTENNA MOUNT  
 50'-3" +/- AGL TOP OF (1) PROPOSED ANTENNA  
 48'-7" +/- AGL TOP OF (1) PROPOSED ANTENNA  
 47'-8" +/- AGL TOP OF (1) PROPOSED ANTENNA  
 46'-3" +/- AGL RAD CENTER

ATTACHED TO PROPOSED ANTENNA PIPE  
 (3) PROPOSED ANTENNAS ATTACHED TO PROPOSED ANTENNA MOUNT  
 50'-3" +/- AGL TOP OF (1) PROPOSED ANTENNA  
 47'-8" +/- AGL TOP OF (1) PROPOSED ANTENNA

46'-3" +/- AGL RAD CENTER  
 (2) PROPOSED HVAC CONDENSERS ATTACHED TO PROPOSED ROOF CURBS  
 2 GPS UNITS ATTACHED TO PROPOSED ANTENNA PIPES  
 ANTENNAS ATTACHED TO PROPOSED ANTENNA MOUNT  
 1'-9" +/- AGL USED ANTENNA/ GPS UNIT  
 1'-1" +/- AGL USED ANTENNA  
 2'-2" +/- AGL USED ANTENNA  
 3'-9" +/- AGL RAD CENTER

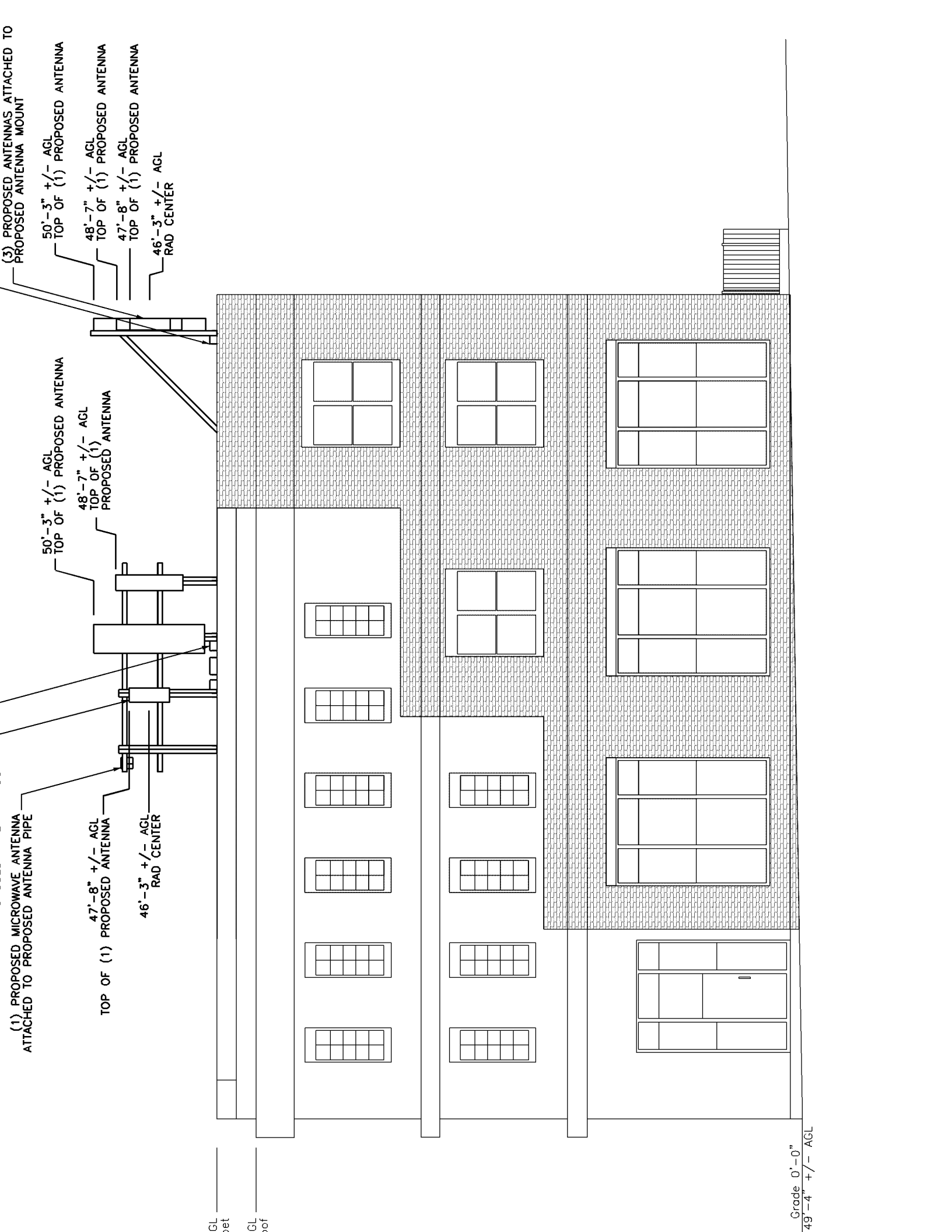
41'-5" +/- AGL Top Of Parapet  
 38'-7" +/- AGL Roof

ELECTRIC METER BANK SOCKET

USED GEN PLUG

airs

Grade 0'-0"  
 49'-4" +/- AGL



(3) PROPOSED ANTENNAS ATTACHED TO PROPOSED ANTENNA MOUNT

50'-3" +/- AGL  
TOP OF (1) PROPOSED ANTENNA

48'-7" +/- AGL  
TOP OF (1) PROPOSED ANTENNA

47'-8" +/- AGL  
TOP OF (1) PROPOSED ANTENNA

46'-3" +/- AGL  
RAD CENTER

50'-3" +/- AGL  
TOP OF (1) PROPOSED ANTENNA

48'-7" +/- AGL  
TOP OF (1) PROPOSED ANTENNA

(1) PROPOSED MICROWAVE ANTENNA ATTACHED TO PROPOSED ANTENNA PIPE

47'-8" +/- AGL  
TOP OF (1) PROPOSED ANTENNA

46'-3" +/- AGL  
RAD CENTER

GL  
et

GL  
oof

Grade 0'-0"  
49'-4" +/- AGL

FIRE SUPPRESSION SYSTEM

PROPOSED TELCO BOARD ATTACHED TO PROPOSED WALL

REMOVE EXISTING WINDOWS. MATCH EXISTING ADJACENT FINISHING FEATURE (TYP FOR 2)

REMOVE AND TELCO CONDUITS FROM EXISTING EXTERIOR. SEAL PENETRATIONS WATERTIGHT.

REMOVE AND TELCO CONDUITS FROM EXISTING EXTERIOR. SEAL PENETRATIONS WATERTIGHT.

PROPOSED EQUIPMENT CABINETS WITHIN PROPOSED EQUIPMENT ROOM (TYP FOR 3)

~Alleyway~

Existing HVAC Condenser (Typ)

Existing Access Door

Existing Breaker Panel

PROPOSED 3'-0" WIDE DOOR

PROPOSED HVAC UNIT (TYP)

PROPOSED PPC CABINET

PROPOSED BROADBAND EQUIPMENT CABINET

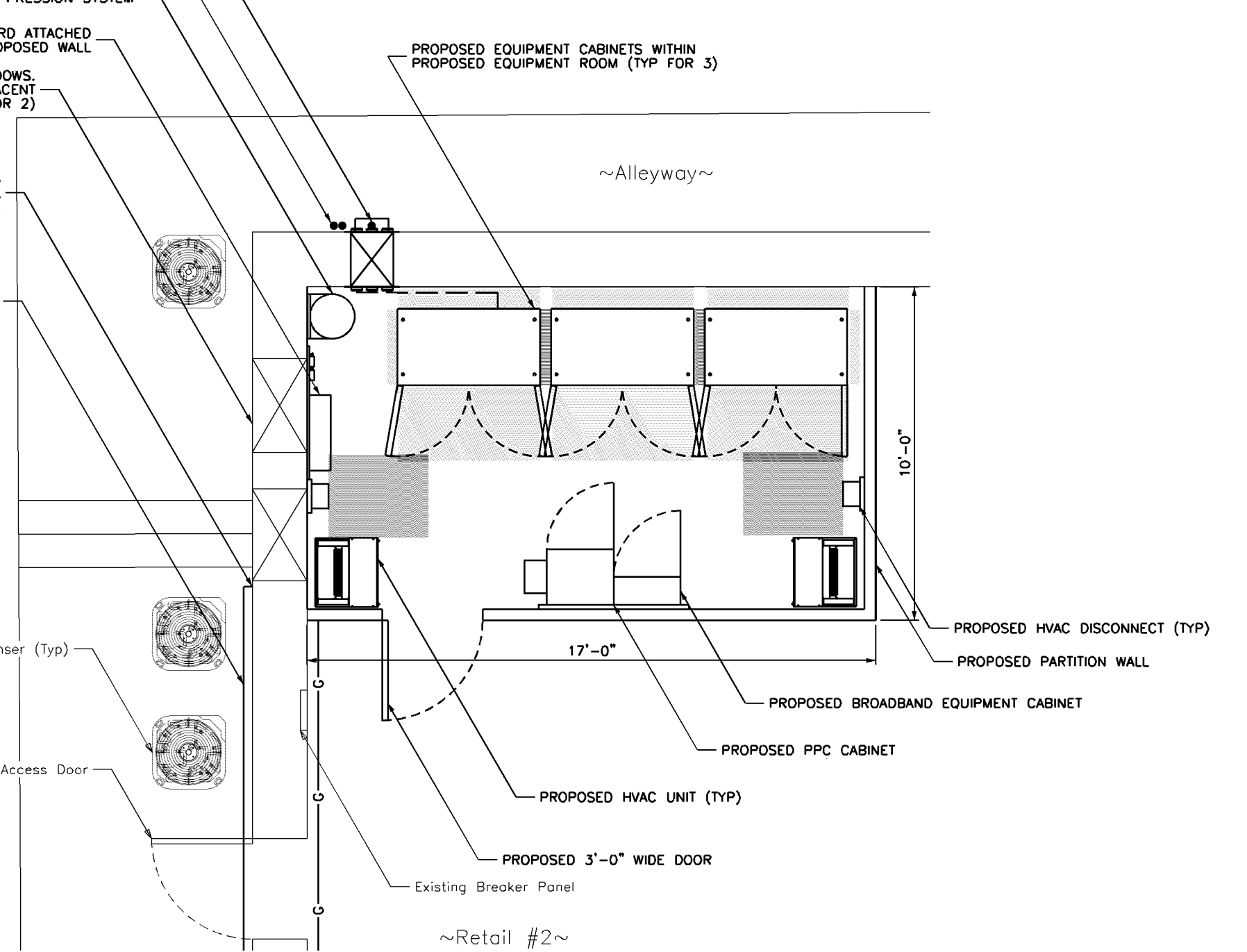
PROPOSED HVAC DISCONNECT (TYP)

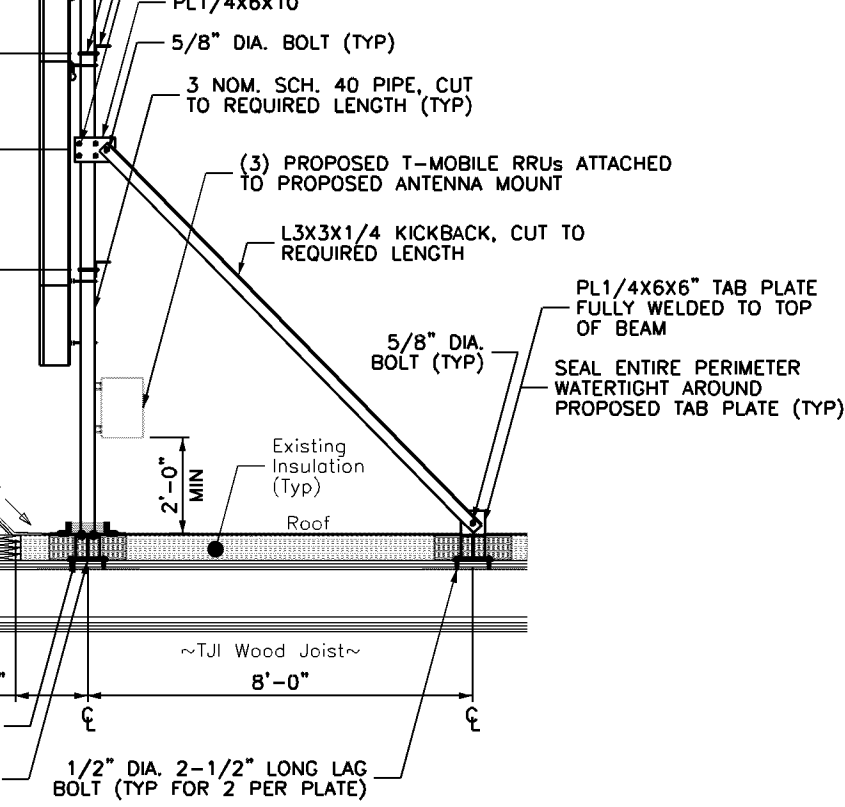
PROPOSED PARTITION WALL

17'-0"

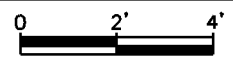
10'-0"

~Retail #2~

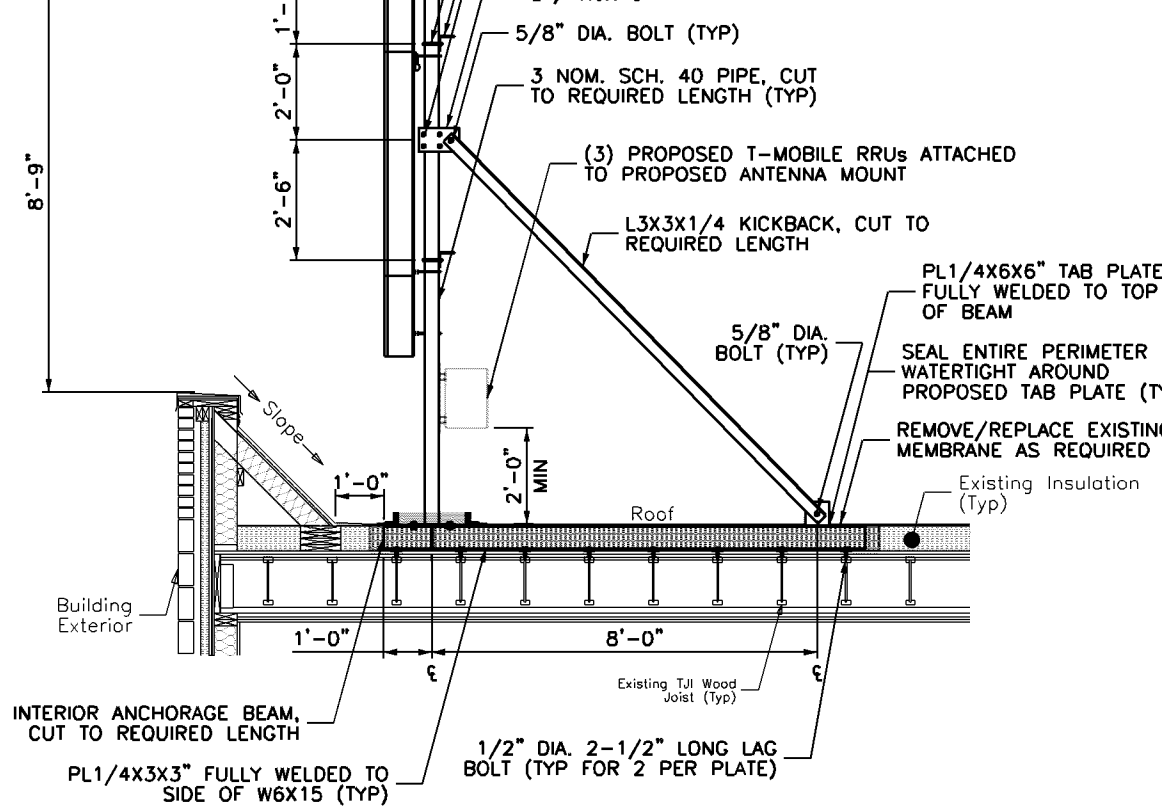




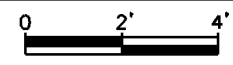
(ALPHA SECTOR)



= 1'-0"

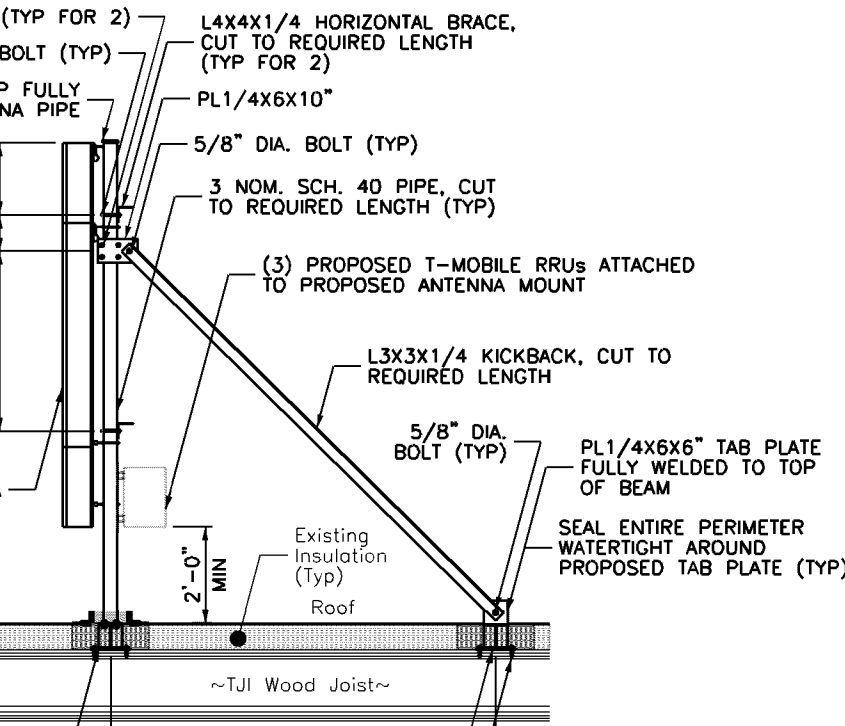


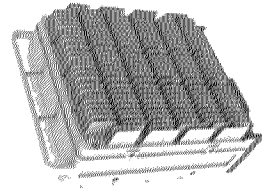
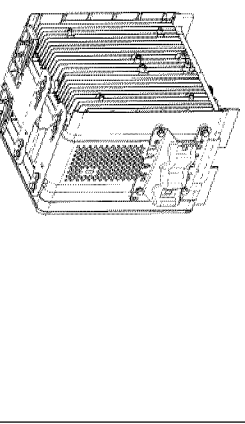
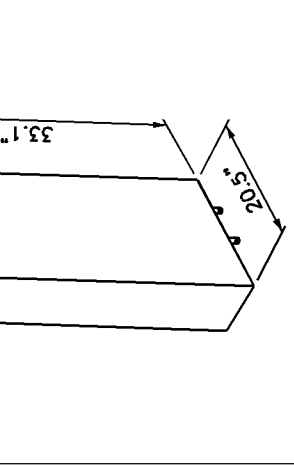
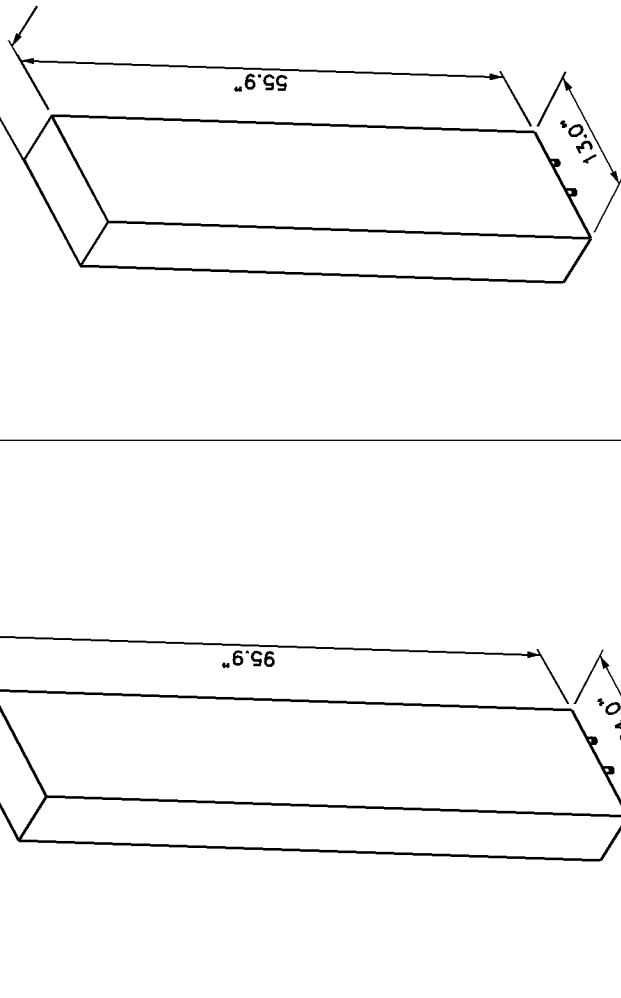
2 ANTENNA MOUNT DETAIL (BETA SECTOR)



11x17 SCALE: 1/4" = 1'-0"

22x34 SCALE: 1/2" = 1'-0"





**6** **RRU SPEC (B25)**  
11x17 SCALE: NTS 22x34 SCALE: NTS

**RADIO 4449-B71+B85**  
WEIGHT: 75.0 lbs  
DIMENSIONS: H17.9"xW13.2"xD10.6"

**4** **AIR 6449 B41 SPECS**  
11x17 SCALE: NTS 22x34 SCALE: NTS

**RADIO 4415-B66A**  
WEIGHT: 46.3 lbs  
DIMENSIONS: H16.5"xW13.5"xD5.7"

**7** **RRU SPEC (B71+B85)**  
11x17 SCALE: NTS 22x34 SCALE: NTS

**RADIO 4449-B71+B85**  
WEIGHT: 75.0 lbs  
DIMENSIONS: H17.9"xW13.2"xD10.6"

**5** **RRU SPEC (B66A)**  
11x17 SCALE: NTS 22x34 SCALE: NTS

**APX16DWW-S-E-A20 SPECS**  
11x17 SCALE: NTS 22x34 SCALE: NTS

**2** **APXVAALL24\_43-U-NA20 SPECS**  
11x17 SCALE: NTS 22x34 SCALE: NTS

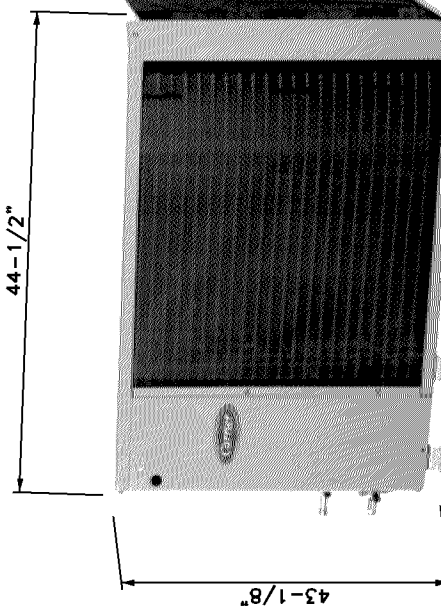
**3** **APX16DWW-S-E-A20 SPECS**  
11x17 SCALE: NTS 22x34 SCALE: NTS

**Switch**  
Anywhere

**Specifications**

| Specifications            | ISB   |
|---------------------------|---|
| <b>RADIO</b>              |   |
| Speed and Range           | Typical: Scalable up to 300Mbps at 500m range (MLOS) and 3km range (LOS), 300Mbps at 13km range (LOS)                                   |
| Latency                   | Typical: <400µsec   |
| Frequency Bands           | FDD+ (no A or B side) operation across all 5 GHz UHF bands  |
| Antenna Beamwidth         | 20 degrees, steerable over 40 degrees   |
| ERP                       | FCC: up to +42 dBm; EIRP: up to +30dBm  |
| Adaptive Rate Modulation  | Supported via proprietary adaptive algorithms   |
| Interference Mitigation   | Supported via proprietary avoidance and cancellation algorithms   |
| Diversity                 | Supported via proprietary antenna array signal processing   |
| Security                  | AES-256 OTA Encryption  |
| <b>SWITCH</b>             |   |
| Carrier Ethernet Features |   |
| Interfaces                | 1x17x1 and 802.3ac QAM, Q in Q, FEC, 256Q, reflection, QoS Broadcast / Unknown / Multicast (BUM) filter, Configurable latency per queue |
| QoS                       | 1 x GbE (Cu), 1 x GbE (SFP or Cu), 1 ALDS radio interface (see above)   |
| Tuning                    | 802.1p classification, strict priority scheduling, WQRR scheduling  |
| Management                | 1588v2 Transparent Clock  |
| Dimensions (W x H x D)    | HTTP, ssh, Telnet, SNMP v2c & v3, IPv6, Flying Clasp  |
| Weight                    | 200mm width, 250mm height, 90mm depth   |
| Power Input               | 4 kg  |
| Temperature               | IBR-1300: PoE<br>IBR-1301: 90-240 VAC<br>-40C to +50C operating<br>-55C to +55C storage   |

|                    |               |
|--------------------|---------------|
| OUTDOOR UNIT NO.   | LFZE_SA6994   |
| UL NO.             | 24AHA406A0030 |
| MODEL NO.          | 5 TON         |
| CAPACITY           |               |
| CONDENSING UNIT    |               |
| FAN MOTOR RATED HP | 1/4           |
| FAN NOMINAL CFM    | 2785          |
| ELECTRICAL DATA    |               |
| VOLTS/PH           | 208/230/1     |
| CKT BKR AMPS       | 50            |



CARRIER  
MODEL NO. 24AHA406A0030  
CONDENSING UNIT  
UL NO. LFZE\_SA6994

**Specifications**

| Specifications  | ISB |
|---|-----|
| FCC Part 15.475, 15.479, 15.479A, 15.479B, 15.479C, 15.479D, 15.479E, 15.479F, 15.479G, 15.479H, 15.479I, 15.479J, 15.479K, 15.479L, 15.479M, 15.479N, 15.479O, 15.479P, 15.479Q, 15.479R, 15.479S, 15.479T, 15.479U, 15.479V, 15.479W, 15.479X, 15.479Y, 15.479Z, 15.479AA, 15.479AB, 15.479AC, 15.479AD, 15.479AE, 15.479AF, 15.479AG, 15.479AH, 15.479AI, 15.479AJ, 15.479AK, 15.479AL, 15.479AM, 15.479AN, 15.479AO, 15.479AP, 15.479AQ, 15.479AR, 15.479AS, 15.479AT, 15.479AU, 15.479AV, 15.479AW, 15.479AX, 15.479AY, 15.479AZ, 15.479BA, 15.479BB, 15.479BC, 15.479BD, 15.479BE, 15.479BF, 15.479BG, 15.479BH, 15.479BI, 15.479BJ, 15.479BK, 15.479BL, 15.479BM, 15.479BN, 15.479BO, 15.479BP, 15.479BQ, 15.479BR, 15.479BS, 15.479BT, 15.479BU, 15.479BV, 15.479BW, 15.479BX, 15.479BY, 15.479BZ, 15.479CA, 15.479CB, 15.479CC, 15.479CD, 15.479CE, 15.479CF, 15.479CG, 15.479CH, 15.479CI, 15.479CJ, 15.479CK, 15.479CL, 15.479CM, 15.479CN, 15.479CO, 15.479CP, 15.479CQ, 15.479CR, 15.479CS, 15.479CT, 15.479CU, 15.479CV, 15.479CW, 15.479CX, 15.479CY, 15.479CZ, 15.479DA, 15.479DB, 15.479DC, 15.479DD, 15.479DE, 15.479DF, 15.479DG, 15.479DH, 15.479DI, 15.479DJ, 15.479DK, 15.479DL, 15.479DM, 15.479DN, 15.479DO, 15.479DP, 15.479DQ, 15.479DR, 15.479DS, 15.479DT, 15.479DU, 15.479DV, 15.479DW, 15.479DX, 15.479DY, 15.479DZ, 15.479EA, 15.479EB, 15.479EC, 15.479ED, 15.479EE, 15.479EF, 15.479EG, 15.479EH, 15.479EI, 15.479EJ, 15.479EK, 15.479EL, 15.479EM, 15.479EN, 15.479EO, 15.479EP, 15.479EQ, 15.479ER, 15.479ES, 15.479ET, 15.479EU, 15.479EV, 15.479EW, 15.479EX, 15.479EY, 15.479EZ, 15.479FA, 15.479FB, 15.479FC, 15.479FD, 15.479FE, 15.479FF, 15.479FG, 15.479FH, 15.479FI, 15.479FJ, 15.479FK, 15.479FL, 15.479FM, 15.479FN, 15.479FO, 15.479FP, 15.479FQ, 15.479FR, 15.479FS, 15.479FT, 15.479FU, 15.479FV, 15.479FW, 15.479FX, 15.479FY, 15.479FZ, 15.479GA, 15.479GB, 15.479GC, 15.479GD, 15.479GE, 15.479GF, 15.479GG, 15.479GH, 15.479GI, 15.479GJ, 15.479GK, 15.479GL, 15.479GM, 15.479GN, 15.479GO, 15.479GP, 15.479GQ, 15.479GR, 15.479GS, 15.479GT, 15.479GU, 15.479GV, 15.479GW, 15.479GX, 15.479GY, 15.479GZ, 15.479HA, 15.479HB, 15.479HC, 15.479HD, 15.479HE, 15.479HF, 15.479HG, 15.479HH, 15.479HI, 15.479HJ, 15.479HK, 15.479HL, 15.479HM, 15.479HN, 15.479HO, 15.479HP, 15.479HQ, 15.479HR, 15.479HS, 15.479HT, 15.479HU, 15.479HV, 15.479HW, 15.479HX, 15.479HY, 15.479HZ, 15.479IA, 15.479IB, 15.479IC, 15.479ID, 15.479IE, 15.479IF, 15.479IG, 15.479IH, 15.479II, 15.479IJ, 15.479IK, 15.479IL, 15.479IM, 15.479IN, 15.479IO, 15.479IP, 15.479IQ, 15.479IR, 15.479IS, 15.479IT, 15.479IU, 15.479IV, 15.479IW, 15.479IX, 15.479IY, 15.479IZ, 15.479JA, 15.479JB, 15.479JC, 15.479JD, 15.479JE, 15.479JF, 15.479JG, 15.479JH, 15.479JI, 15.479JJ, 15.479JK, 15.479JL, 15.479JM, 15.479JN, 15.479JO, 15.479JP, 15.479JQ, 15.479JR, 15.479JS, 15.479JT, 15.479JU, 15.479JV, 15.479JW, 15.479JX, 15.479JY, 15.479JZ, 15.479KA, 15.479KB, 15.479KC, 15.479KD, 15.479KE, 15.479KF, 15.479KG, 15.479KH, 15.479KI, 15.479KJ, 15.479KK, 15.479KL, 15.479KM, 15.479KN, 15.479KO, 15.479KP, 15.479KQ, 15.479KR, 15.479KS, 15.479KT, 15.479KU, 15.479KV, 15.479KW, 15.479KX, 15.479KY, 15.479KZ, 15.479LA, 15.479LB, 15.479LC, 15.479LD, 15.479LE, 15.479LF, 15.479LG, 15.479LH, 15.479LI, 15.479LJ, 15.479LK, 15.479LL, 15.479LM, 15.479LN, 15.479LO, 15.479LP, 15.479LQ, 15.479LR, 15.479LS, 15.479LT, 15.479LU, 15.479LV, 15.479LW, 15.479LX, 15.479LY, 15.479LZ, 15.479MA, 15.479MB, 15.479MC, 15.479MD, 15.479ME, 15.479MF, 15.479MG, 15.479MH, 15.479MI, 15.479MJ, 15.479MK, 15.479ML, 15.479MN, 15.479MO, 15.479MP, 15.479MQ, 15.479MR, 15.479MS, 15.479MT, 15.479MU, 15.479MV, 15.479MW, 15.479MX, 15.479MY, 15.479MZ, 15.479NA, 15.479NB, 15.479NC, 15.479ND, 15.479NE, 15.479NF, 15.479NG, 15.479NH, 15.479NI, 15.479NJ, 15.479NK, 15.479NL, 15.479NM, 15.479NO, 15.479NP, 15.479NQ, 15.479NR, 15.479NS, 15.479NT, 15.479NU, 15.479NV, 15.479NW, 15.479NX, 15.479NY, 15.479NZ, 15.479OA, 15.479OB, 15.479OC, 15.479OD, 15.479OE, 15.479OF, 15.479OG, 15.479OH, 15.479OI, 15.479OJ, 15.479OK, 15.479OL, 15.479OM, 15.479ON, 15.479OO, 15.479OP, 15.479OQ, 15.479OR, 15.479OS, 15.479OT, 15.479OU, 15.479OV, 15.479OW, 15.479OX, 15.479OY, 15.479OZ, 15.479PA, 15.479PB, 15.479PC, 15.479PD, 15.479PE, 15.479PF, 15.479PG, 15.479PH, 15.479PI, 15.479PJ, 15.479PK, 15.479PL, 15.479PM, 15.479PN, 15.479PO, 15.479PP, 15.479PQ, 15.479PR, 15.479PS, 15.479PT, 15.479PU, 15.479PV, 15.479PW, 15.479PX, 15.479PY, 15.479PZ, 15.479QA, 15.479QB, 15.479QC, 15.479QD, 15.479QE, 15.479QF, 15.479QG, 15.479QH, 15.479QI, 15.479QJ, 15.479QK, 15.479QL, 15.479QM, 15.479QN, 15.479QO, 15.479QP, 15.479QQ, 15.479QR, 15.479QS, 15.479QT, 15.479QU, 15.479QV, 15.479QW, 15.479QX, 15.479QY, 15.479QZ, 15.479RA, 15.479RB, 15.479RC, 15.479RD, 15.479RE, 15.479RF, 15.479RG, 15.479RH, 15.479RI, 15.479RJ, 15.479RK, 15.479RL, 15.479RM, 15.479RN, 15.479RO, 15.479RP, 15.479RQ, 15.479RR, 15.479RS, 15.479RT, 15.479RU, 15.479RV, 15.479RW, 15.479RX, 15.479RY, 15.479RZ, 15.479SA, 15.479SB, 15.479SC, 15.479SD, 15.479SE, 15.479SF, 15.479SG, 15.479SH, 15.479SI, 15.479SJ, 15.479SK, 15.479SL, 15.479SM, 15.479SN, 15.479SO, 15.479SP, 15.479SQ, 15.479SR, 15.479SS, 15.479ST, 15.479SU, 15.479SV, 15.479SW, 15.479SX, 15.479SY, 15.479SZ, 15.479TA, 15.479TB, 15.479TC, 15.479TD, 15.479TE, 15.479TF, 15.479TG, 15.479TH, 15.479TI, 15.479TJ, 15.479TK, 15.479TL, 15.479TM, 15.479TN, 15.479TO, 15.479TP, 15.479TQ, 15.479TR, 15.479TS, 15.479TT, 15.479TU, 15.479TV, 15.479TW, 15.479TX, 15.479TY, 15.479TZ, 15.479UA, 15.479UB, 15.479UC, 15.479UD, 15.479UE, 15.479UF, 15.479UG, 15.479UH, 15.479UI, 15.479UJ, 15.479UK, 15.479UL, 15.479UM, 15.479UN, 15.479UO, 15.479UP, 15.479UQ, 15.479UR, 15.479US, 15.479UT, 15.479UU, 15.479UV, 15.479UW, 15.479UX, 15.479UY, 15.479UZ, 15.479VA, 15.479VB, 15.479VC, 15.479VD, 15.479VE, 15.479VF, 15.479VG, 15.479VH, 15.479VI, 15.479VJ, 15.479VK, 15.479VL, 15.479VM, 15.479VN, 15.479VO, 15.479VP, 15.479VQ, 15.479VR, 15.479VS, 15.479VT, 15.479VU, 15.479VV, 15.479VW, 15.479VX, 15.479VY, 15.479VZ, 15.479WA, 15.479WB, 15.479WC, 15.479WD, 15.479WE, 15.479WF, 15.479WG, 15.479WH, 15.479WI, 15.479WJ, 15.479WK, 15.479WL, 15.479WM, 15.479WN, 15.479WO, 15.479WP, 15.479WQ, 15.479WR, 15.479WS, 15.479WT, 15.479WU, 15.479WV, 15.479WW, 15.479WX, 15.479WY, 15.479WZ, 15.479XA, 15.479XB, 15.479XC, 15.479XD, 15.479XE, 15.479XF, 15.479XG, 15.479XH, 15.479XI, 15.479XJ, 15.479XK, 15.479XL, 15.479XM, 15.479XN, 15.479XO, 15.479XP, 15.479XQ, 15.479XR, 15.479XS, 15.479XT, 15.479XU, 15.479XV, 15.479XW, 15.479XX, 15.479XY, 15.479XZ, 15.479YA, 15.479YB, 15.479YC, 15.479YD, 15.479YE, 15.479YF, 15.479YG, 15.479YH, 15.479YI, 15.479YJ, 15.479YK, 15.479YL, 15.479YM, 15.479YN, 15.479YO, 15.479YP, 15.479YQ, 15.479YR, 15.479YS, 15.479YT, 15.479YU, 15.479YV, 15.479YW, 15.479YX, 15.479YY, 15.479YZ, 15.479ZA, 15.479ZB, 15.479ZC, 15.479ZD, 15.479ZE, 15.479ZF, 15.479ZG, 15.479ZH, 15.479ZI, 15.479ZJ, 15.479ZK, 15.479ZL, 15.479ZM, 15.479ZN, 15.479ZO, 15.479ZP, 15.479ZQ, 15.479ZR, 15.479ZS, 15.479ZT, 15.479ZU, 15.479ZV, 15.479ZW, 15.479ZX, 15.479ZY, 15.479ZZ |     |